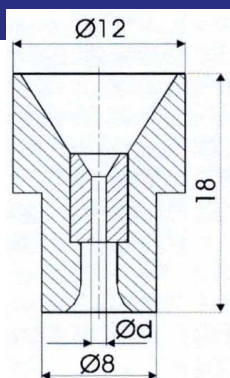




Ceramic drop-in nozzle 3000 bar (42.850 psi)
Keramik Einsteckdüse 3000 bar
Keramische rond straal nozzle 3000 bar



Part No. Teile nr. Art. nr.	Orifice ø in mm. Bohrung ø in mm. Nozzle ø in mm.	Part No. Teile nr. Art. nr.	Orifice ø in mm. Bohrung ø in mm. Nozzle ø in mm.	Max. Wp (bar) Max. Betriebsdruck (bar) Max. werkdruk (bar)
952.000	0 (blind)	952K.140	1,40	3000
952K.080	0,80	952K.150	1,50	
952K .085	0,85	952K.160	1,60	
952K .090	0,90	952K.170	1,70	
952K .095	0,95	952K.180	1,80	
952K .100	1,00	952K.190	1,90	
952K .105	1,05	952K.200	2,00	
952K .110	1,10	952K.210	2,10	
952K .115	1,15	952K.220	2,20	
952K .120	1,20	952K.230	2,30	
952K .130	1,30	952K.240	2,40	

Salomon Jetting Parts B.V.

Hoeksedijk 109, 3299 AE Maasdam, The Netherlands

Tel: +31(0)88 126 1900 Fax: +31(0)88 126 1999

e-mail: info@salomonjettingparts.com

web: www.salomonjettingparts.com